



ORNLReady:

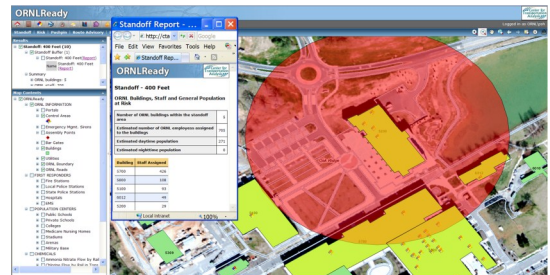
A Web-Based Geospatial Visualization Tool for Emergency Management and Responses

Center for Transportation Analysis
(CTA) Research Areas

- Aviation Safety
- Air Traffic Management Analysis
- Data, Statistical Analysis
- Geo-Spatial Information Tools
- Defense Transportation
- Energy Policy Analysis
- Environmental Policy Analysis
- Highway Safety
- Intelligent Transportation Systems
- Logistics Management
- Supply Chain Management
- Modeling and Simulation
- Transportation Operations
- Planning and Systems Analysis
- Transportation Security

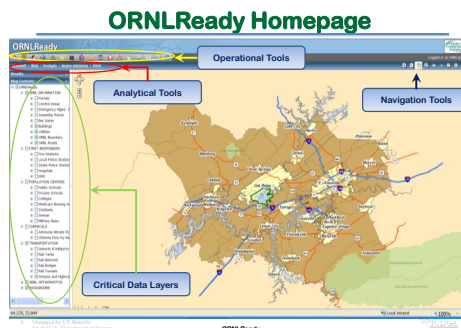
What is ORNLReady?

ORNLReady is a data-driven tool that prepares Oak Ridge National Laboratory (ORNL) for rapid emergency response through comprehensive state-awareness and seamless coordination. At DOE's 2010 Emergency Management Issues - Special Interest Group Annual Conference, DOE named ORNLReady as the most useful training product currently available and transferable to other DOE facilities.



An example of the consequence analysis.

prepares ORNL for scheduled and unscheduled events through careful planning and exercises. It is an active tool currently used by the Laboratory Shift Superintendent (LSS) and the Emergency Operation Center (EOC) during their day-to-day operations, exercises, and event responses. The tool enables LSS and EOC to develop scenario-based crisis management plans. The training aspects of ORNLReady can pose various scenarios—operations, responds, and planning.



How does ORNLReady work?

ORNLReady uses near real-time information and stored data to create a computerized virtual world. This enables LSS and EOC to develop scenario-based emergency plans and to quantify and visualize potential consequences (e.g., number of buildings, assets, and employees impacted) of disasters and other unplanned events. ORNLReady integrates hazard

What does ORNLReady do?

ORNLReady is developed by the Center for Transportation Analysis (CTA) through a collaborative effort with ORNL's Facilities & Operations Directorate and leveraging from research capabilities and results throughout ORNL. The tool

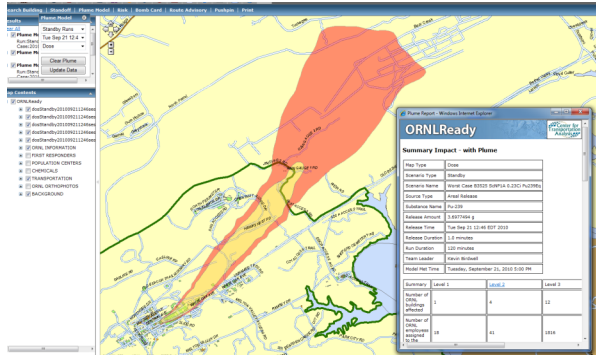
Center for Transportation Analysis
Oak Ridge National Laboratory
2360 Cherahala Boulevard
Knoxville, TN 37932
865.946.1349
(Fax) 865.946.1314

Website: cta.ornl.gov

Oak Ridge National Laboratory is managed
by UT-Battelle, LLC, for the U.S.
Department of Energy under Contract
number DE-AC05-00OR22725



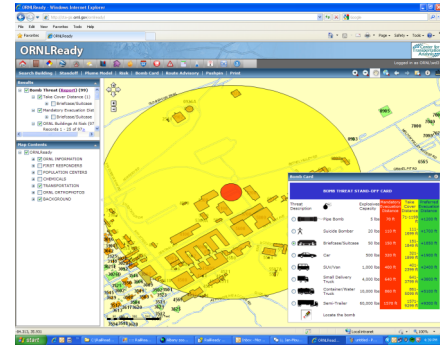
prediction and assessment functions by overlaying plume model results generated from CAPARS with ORNL facilities and other physical assets and estimates potential impacts under each protection



Summary impact with Plume model

action level. Furthermore, a tool to identify impacted ORNL facilities and the levels of stand-off and evacuation distances in response to various levels of bomb threats are also provided in the *ORNLReady*.

The tool includes detailed maps of ORNL and nearby facilities, employee



populations, *Bomb Threat Stand-Off Card* locations of hazardous material, weather tracking and much more – everything needed to help crisis managers visualize potential consequences of events and make informed safety-based decisions. All tools are integrated into a single portal. This provides ORNL with near real-time situational awareness within the ORNL main campus as well as the five counties surrounding ORNL.

For more information please contact Ho-Ling Hwang at (865) 946-1224 or email hwanghl@ornl.gov.